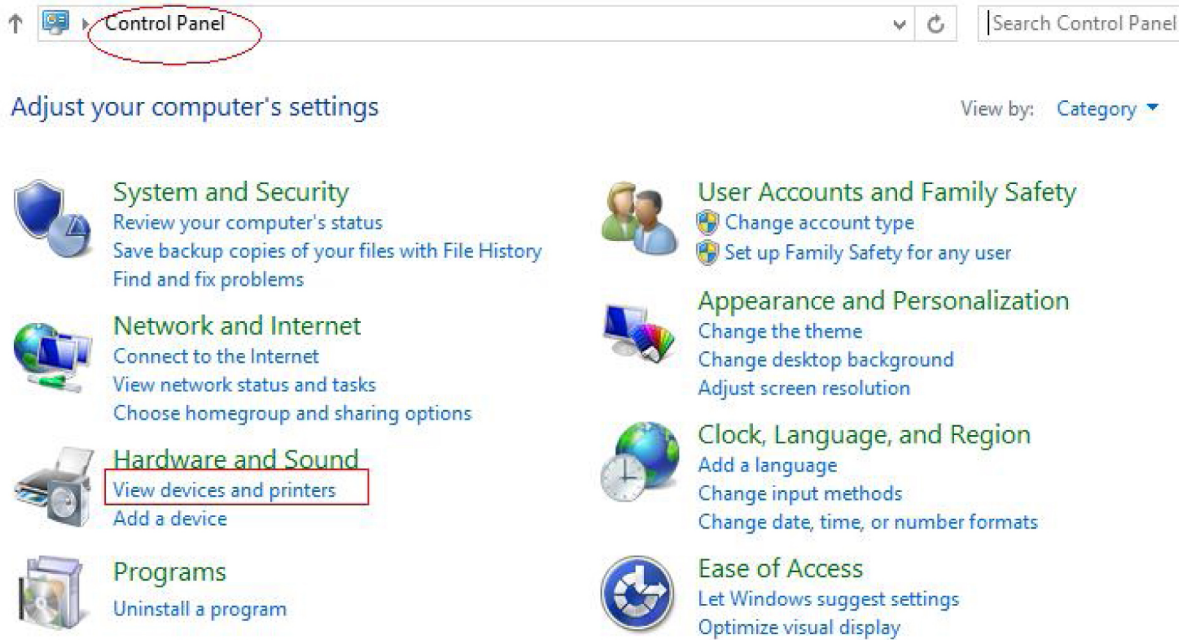


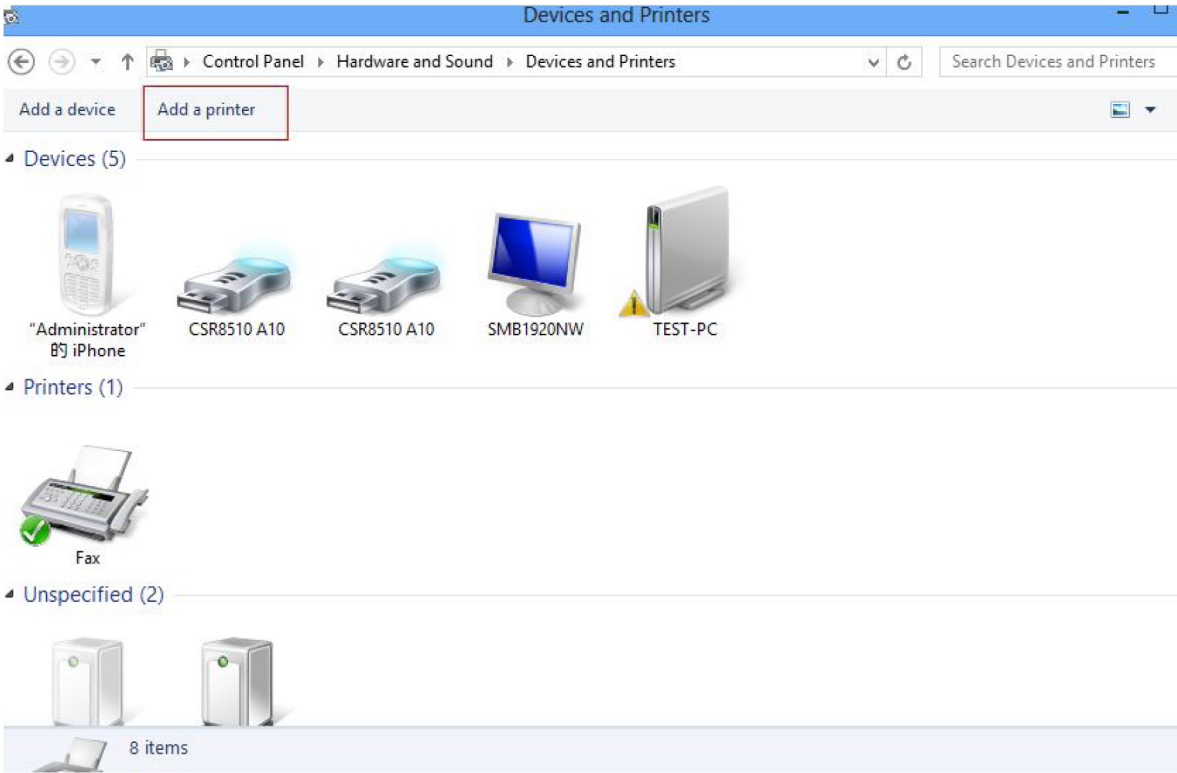
Driver Installation Instructions & Steps

1: Find the “ Control Panel “

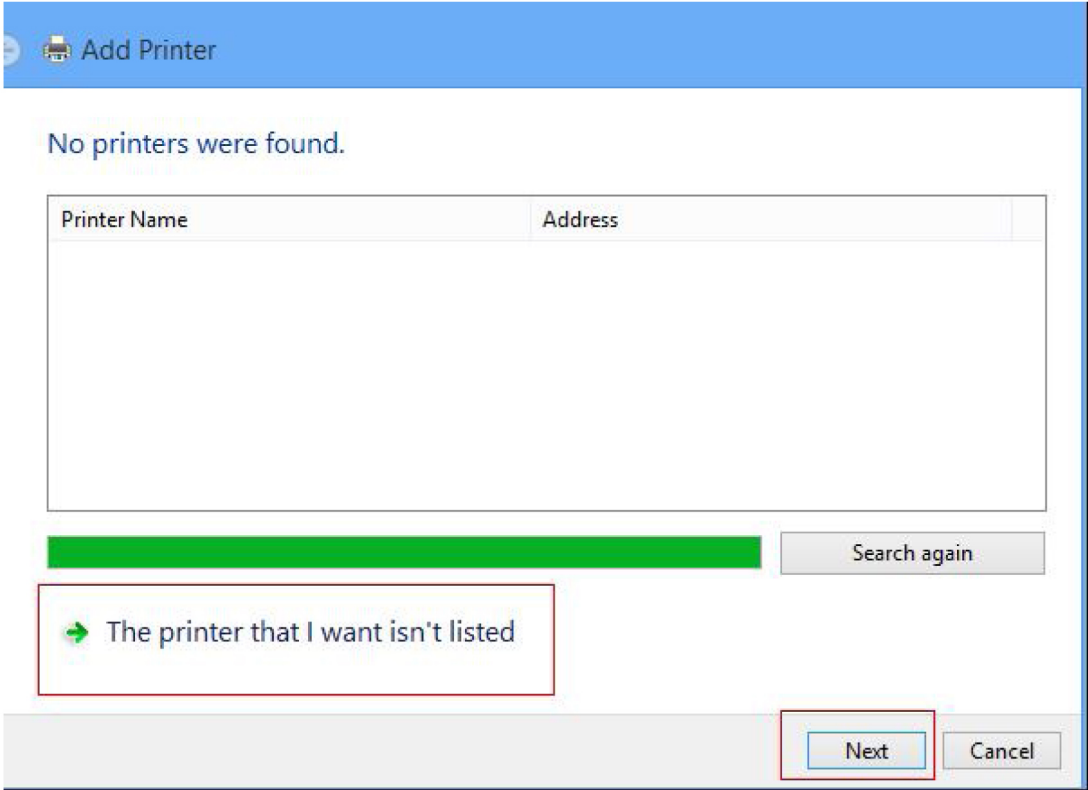
2: Find “ view devices and printers “ (refer to below jpg)



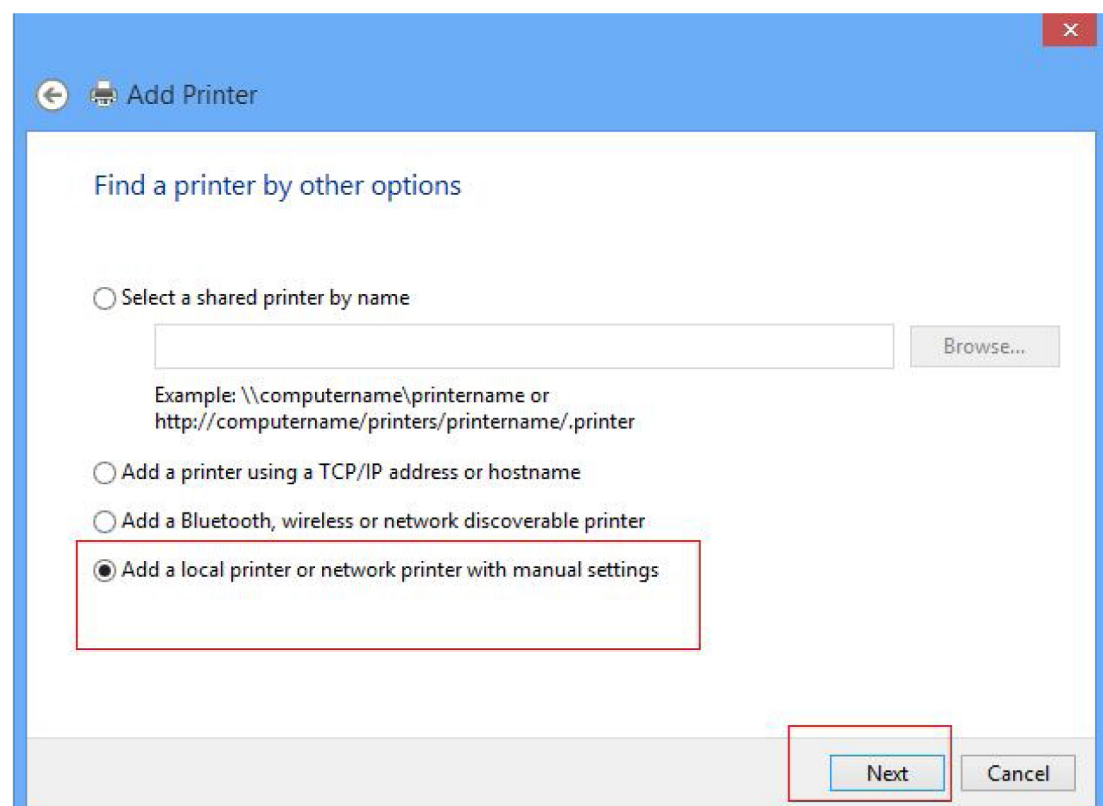
3: To “ Add A Printer “



4: Choose “ The printer that i want isn’t listed “ ---- next:



5: Do the setting as below instruction, click Next, please neglect the warning from the anti virus software in your computer.



The screenshot shows the 'Add Printer' window with the title bar 'Add Printer' and a close button. The main heading is 'Find a printer by other options'. There are three radio button options: 'Select a shared printer by name' (with a text box and a 'Browse...' button), 'Add a printer using a TCP/IP address or hostname', and 'Add a Bluetooth, wireless or network discoverable printer'. The fourth option, 'Add a local printer or network printer with manual settings', is selected and highlighted with a red box. At the bottom right, the 'Next' button is highlighted with a red box, and the 'Cancel' button is also visible.

Find a printer by other options

☐ Select a shared printer by name

Browse...

Example: \\computername\printername or
http://computername/printers/printername/.printer

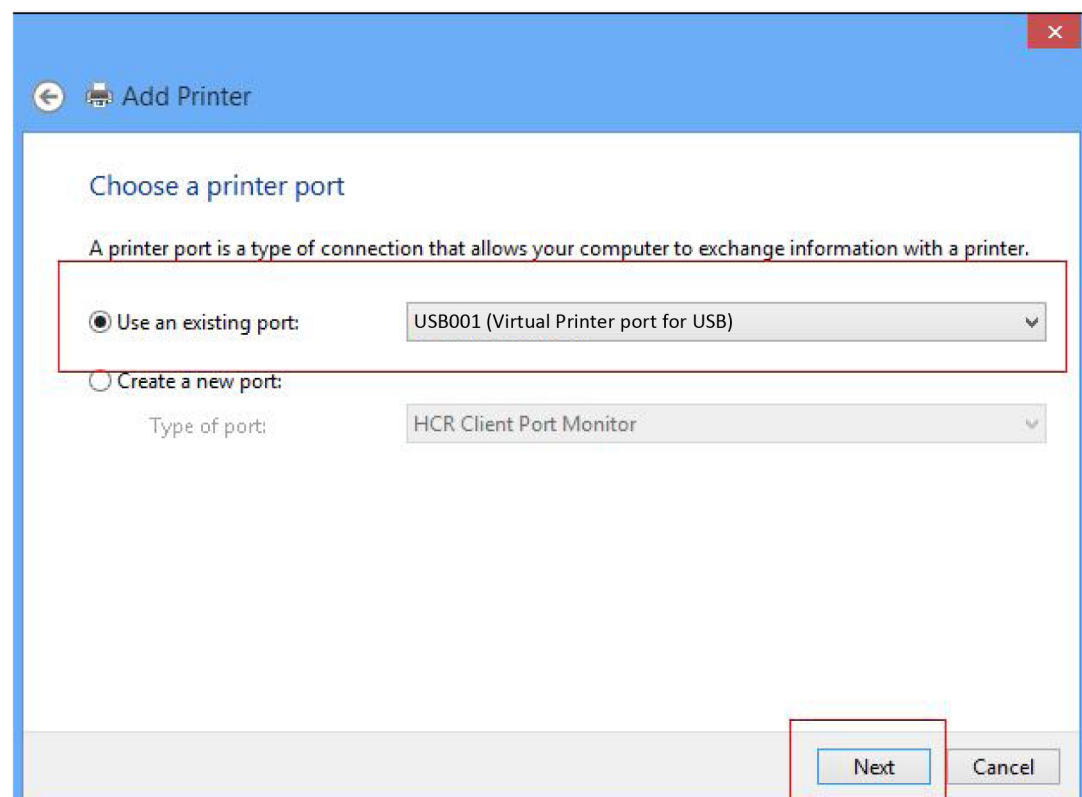
☐ Add a printer using a TCP/IP address or hostname

☐ Add a Bluetooth, wireless or network discoverable printer

☒ Add a local printer or network printer with manual settings

Next Cancel

6: Choose to use Virtual Printer port for USB



The screenshot shows the 'Add Printer' window with the title bar 'Add Printer' and a close button. The main heading is 'Choose a printer port'. Below the heading is a descriptive text: 'A printer port is a type of connection that allows your computer to exchange information with a printer.' There are two radio button options: 'Use an existing port:' and 'Create a new port:'. The 'Use an existing port:' option is selected and highlighted with a red box. Next to it is a dropdown menu showing 'USB001 (Virtual Printer port for USB)'. Below the 'Create a new port:' option, there is a label 'Type of port:' followed by a dropdown menu showing 'HCR Client Port Monitor'. At the bottom right, the 'Next' button is highlighted with a red box, and the 'Cancel' button is also visible.

Choose a printer port

A printer port is a type of connection that allows your computer to exchange information with a printer.

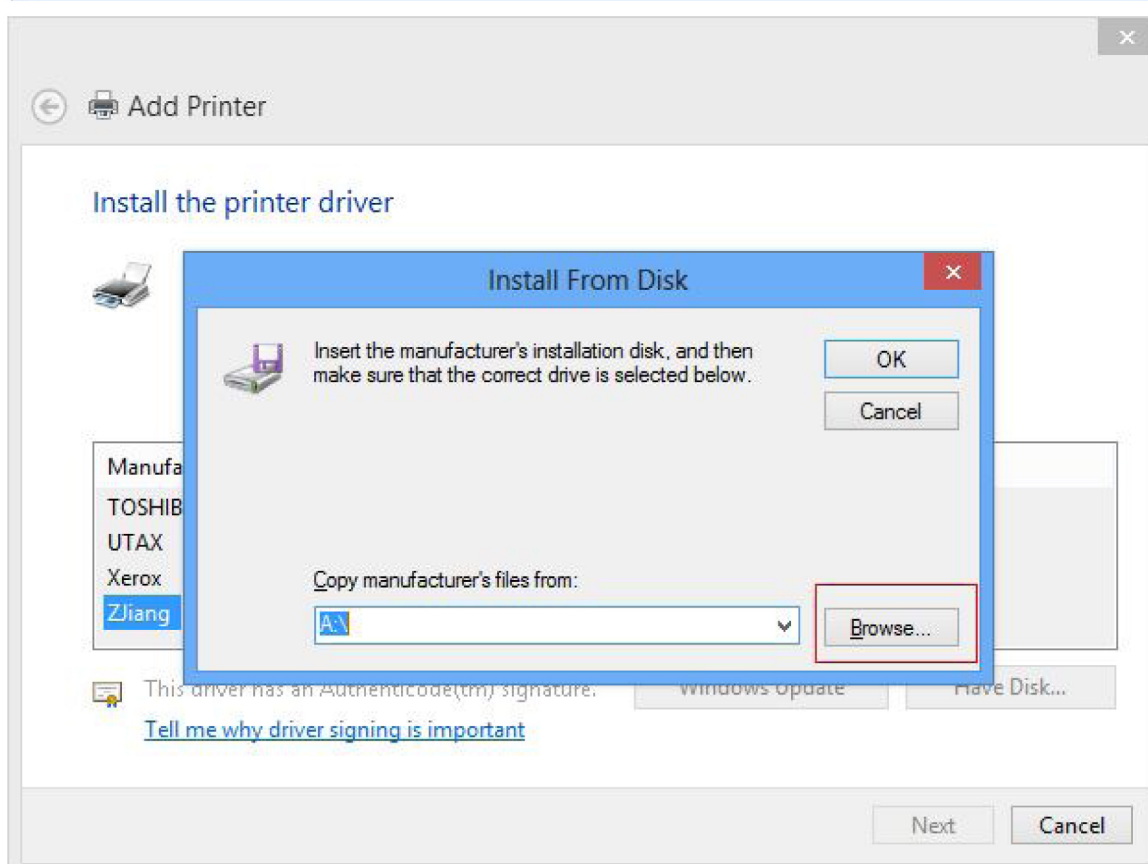
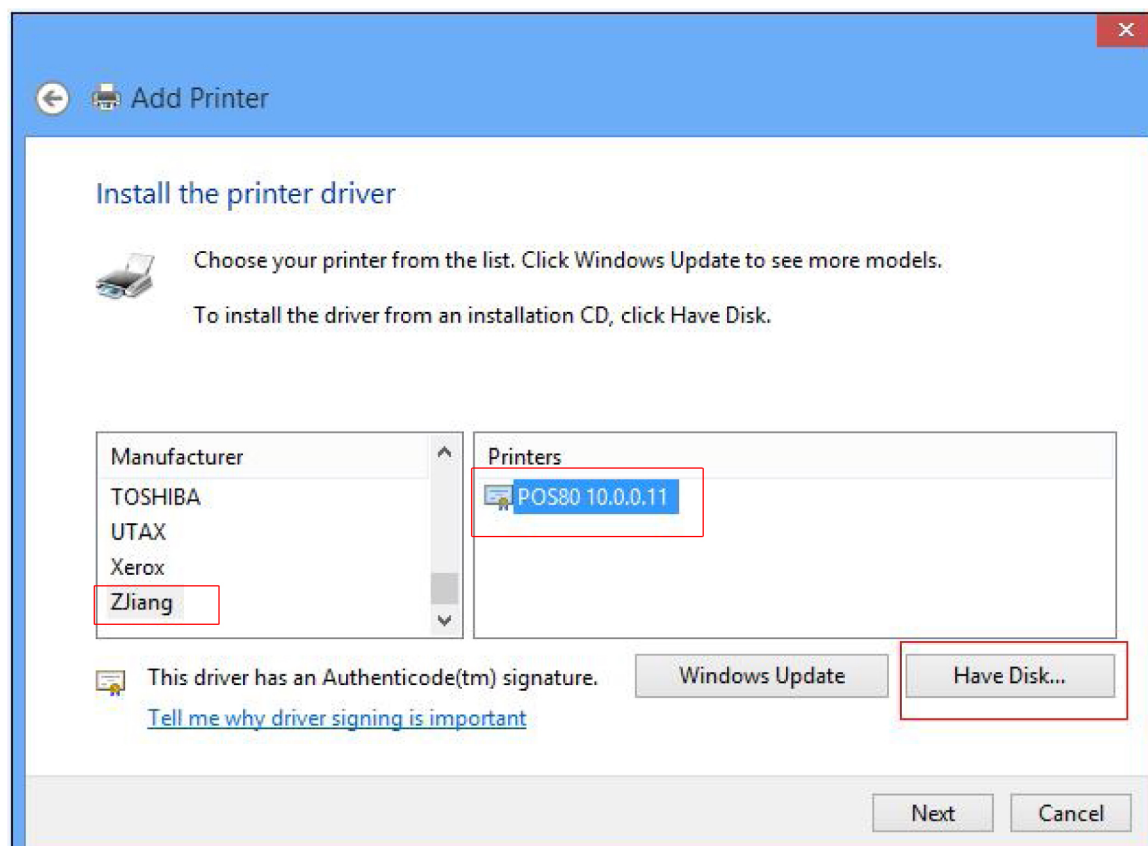
☒ Use an existing port: USB001 (Virtual Printer port for USB)

☐ Create a new port:

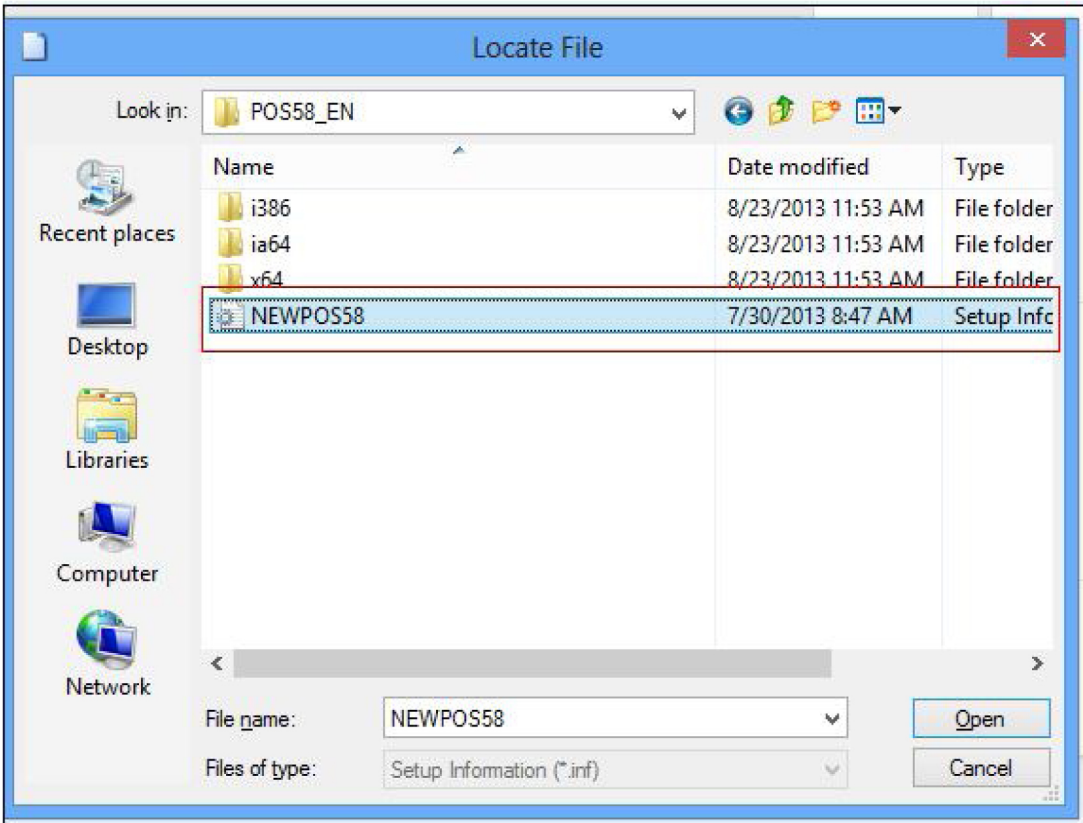
Type of port: HCR Client Port Monitor

Next Cancel

7: Click “ Install from disk “



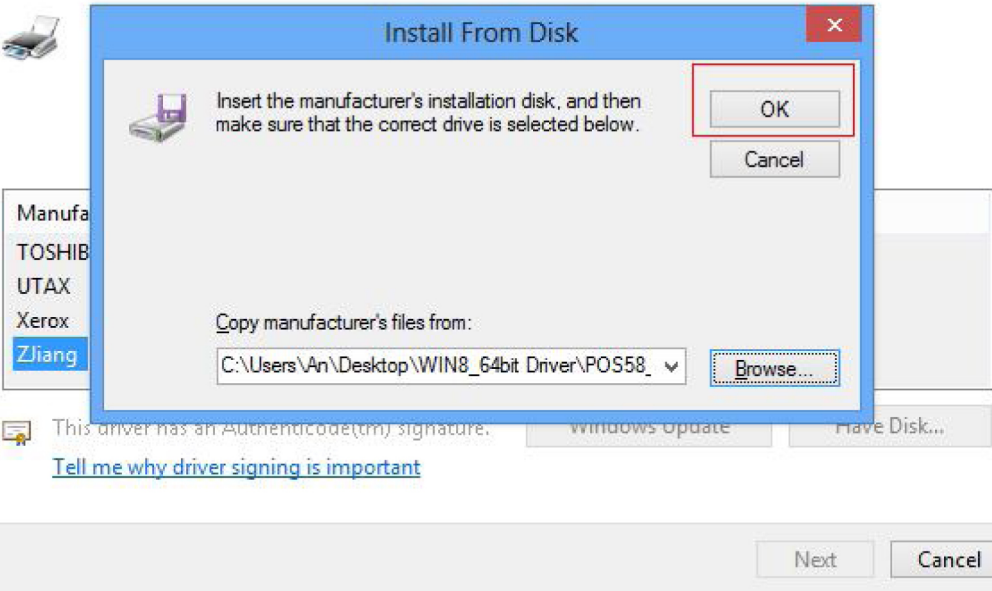
8: Find the driver location and open “ windows 64bit “ than choose your desired driver (we choosed POS58_EN as below jpg)

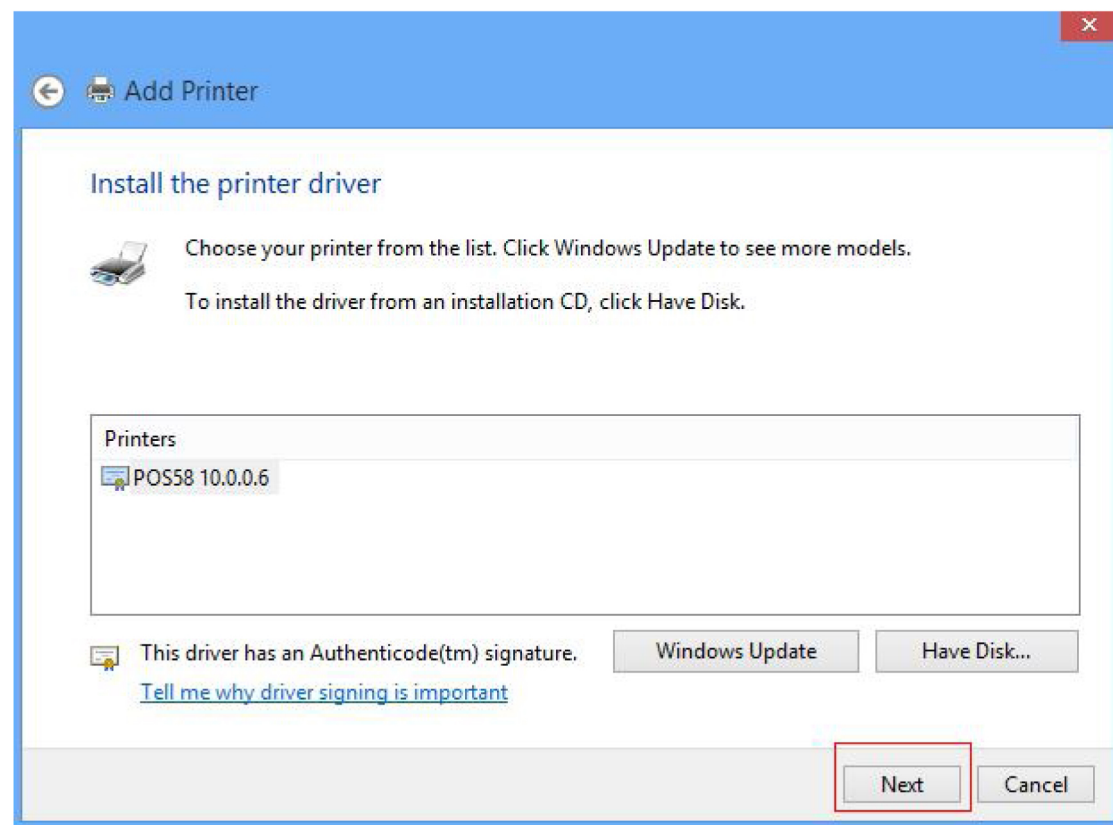


9: Click “ Next “ we come to below jpg

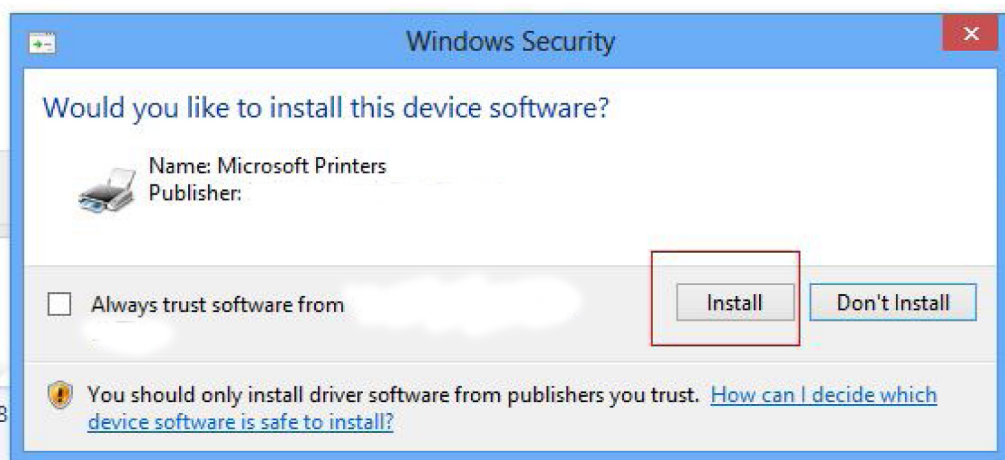
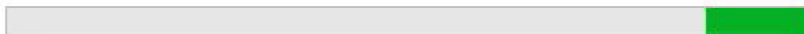


Install the printer driver





Installing printer...



12: We can choose To Share or Not Share this printer during the installation.

13: - Click Finish.

